

# COUNTY LINE FENCE CO

800-564-1200

# VINYL RAILING 200 SERIES

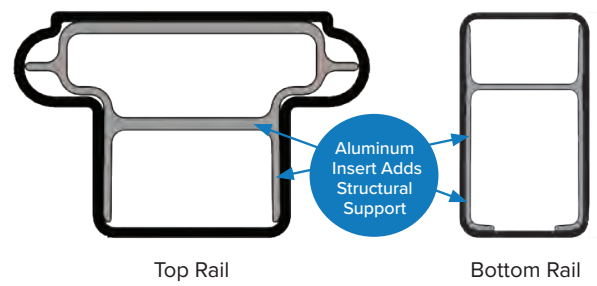


## SIMPLE AND STYLISH

The unique design of the 200 Series makes it stand out among other railings. With its flat top, rounded sides, and classic good looks, the 200 Series can go almost anywhere.

- 3 3/16" Wide Top Rail
- Railing Height Options: 36" · 42"
- Railing Length Options: 5' · 6' · 7' · 8' · 10'
- Boxed sections include top and bottom rails, mounting brackets and hardware, infill, and the installation guide

## RAILING PROFILE




Top Rail

Bottom Rail

## RAILING COLORS



 **MANUFACTURED IN THE USA**  
Superior's products are proudly designed and manufactured in the USA to ensure a quality fit and finish.

# 200 SERIES VINYL RAILING

## INFILL OPTIONS

VINYL ALUMINUM



MODEL



YORK (ROUND)



WITMER (SQUARE)

## POST CAP OPTIONS



Flat



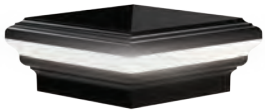
Ball



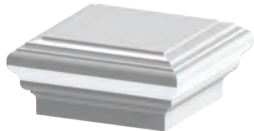
New England

## OPTIONAL INTEGRATED LIGHTING

POST CAP  
LIGHTS



Pyramid



Decorative

Sizes available for 2½", 3¼" and 4" Posts

